

DATA ANALYTICS ARE POWERFUL

HANDLE WITH CARE

Jeremy D. Wendt

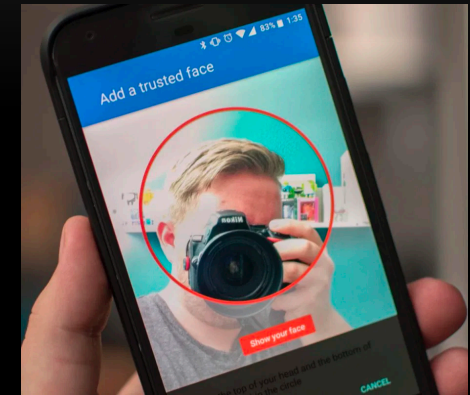
Joint work with Philip Kegelmeyer, Ali Pinar, Tim Shead,
Gary Saavedra, Cosmin Safta, Joe Bertino, and many others

NITROGLYCERIN

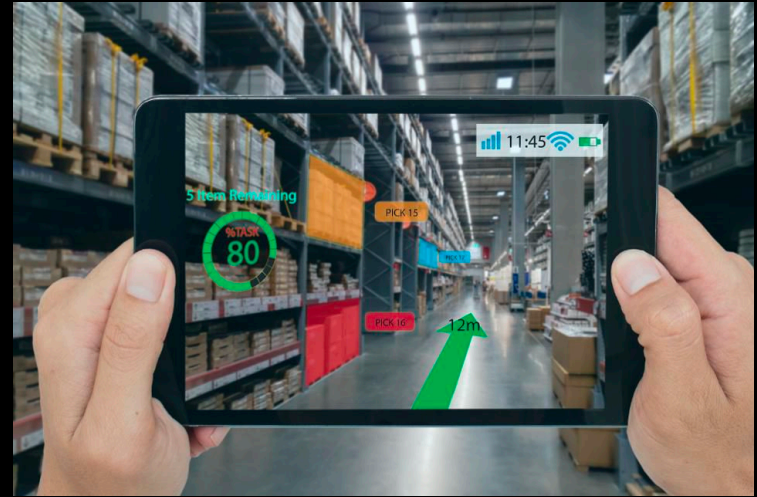


Ascanio Sobrero

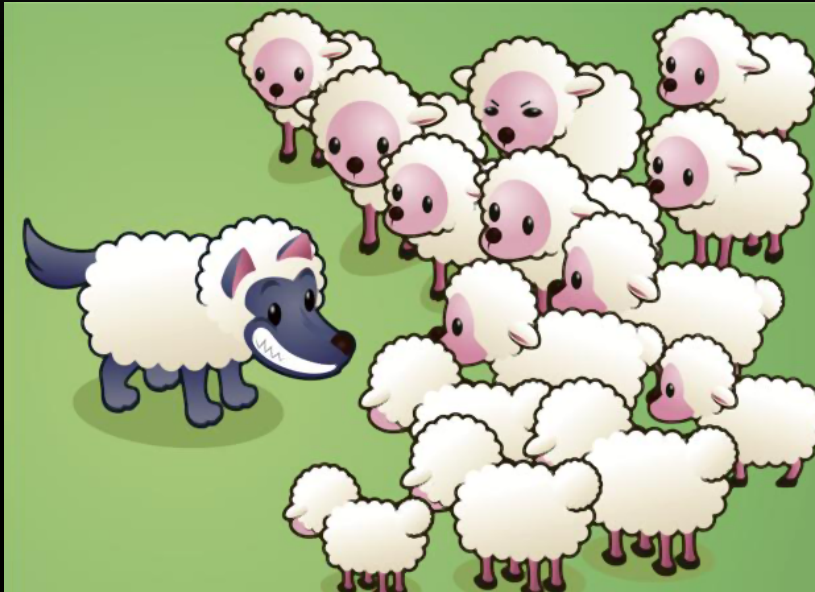
DATA ANALYTICS' DAILY EFFECTS - 2019



DATA ANALYTICS DAILY EFFECTS – SOON?



SUBVERT



e.g., Kegelmeyer, Shead, Crussell, Rodhouse, Robinson, Johnson, Zage, Davis, Wendt, Doak, Cayton, Colbaugh, Glass, Jones, and Shelburg, 2015.

EVADE



e.g., Athalye, Engstrom, Ilyas, and Kwok, 2018.

REVEAL



e.g., Fredrikson, Jha, and Ristenpart, 2015, or Shorki, Stronati, Song, Shmatikov, 2017.

APPLY

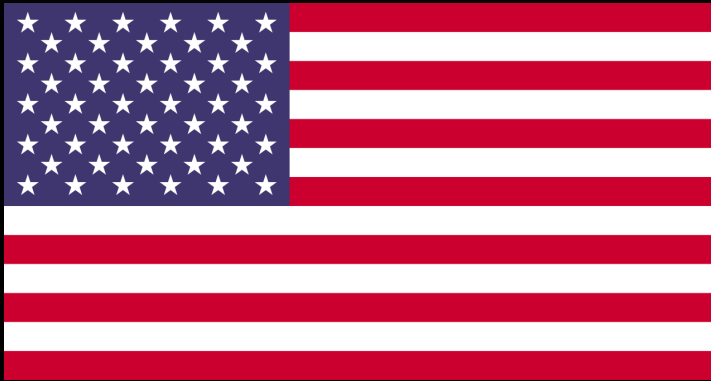


Jordan Peele uses AI, President Obama in fake news PSA

e.g., Isola, Zhu, Zhou, and Efros, 2016 or Kim, Garrido, Tewari, Xu, Thies, NieSSner, Perez, Richardt, Zollhofer, Theobalt, 2018

WHO ARE ADVERSARIES?

- It gets complicated really quickly



ADVERSARY'S ABILITIES



- In all analyses that follow, we provided the adversary significant abilities:
 - Full awareness of our chosen technique and implementation
 - Full understanding of the data to be analyzed
 - Some ability to alter the data or labels to affect our analytics

SUPERVISED LEARNING

0	0	0	0	0	0	0	0	0	0	0
1	1	1	1	1	1	1	1	1	1	1
2	2	2	2	2	2	2	2	2	2	2
3	3	3	3	3	3	3	3	3	3	3
4	4	4	4	4	4	4	4	4	4	4
5	5	5	5	5	5	5	5	5	5	5
6	6	6	6	6	6	6	6	6	6	6
7	7	7	7	7	7	7	7	7	7	7
8	8	8	8	8	8	8	8	8	8	8
9	9	9	9	9	9	9	9	9	9	9

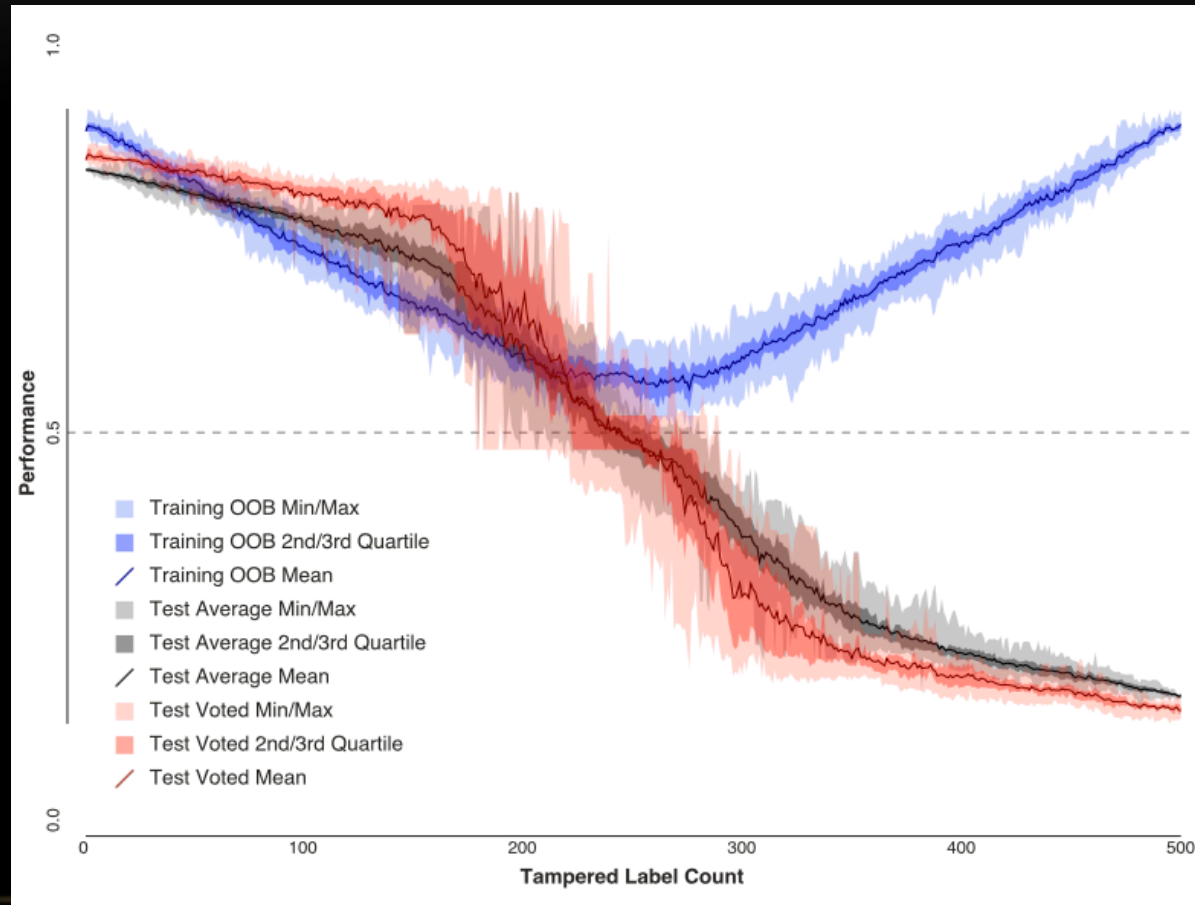


What happens if you tell the system this is a '1' or '8' ?

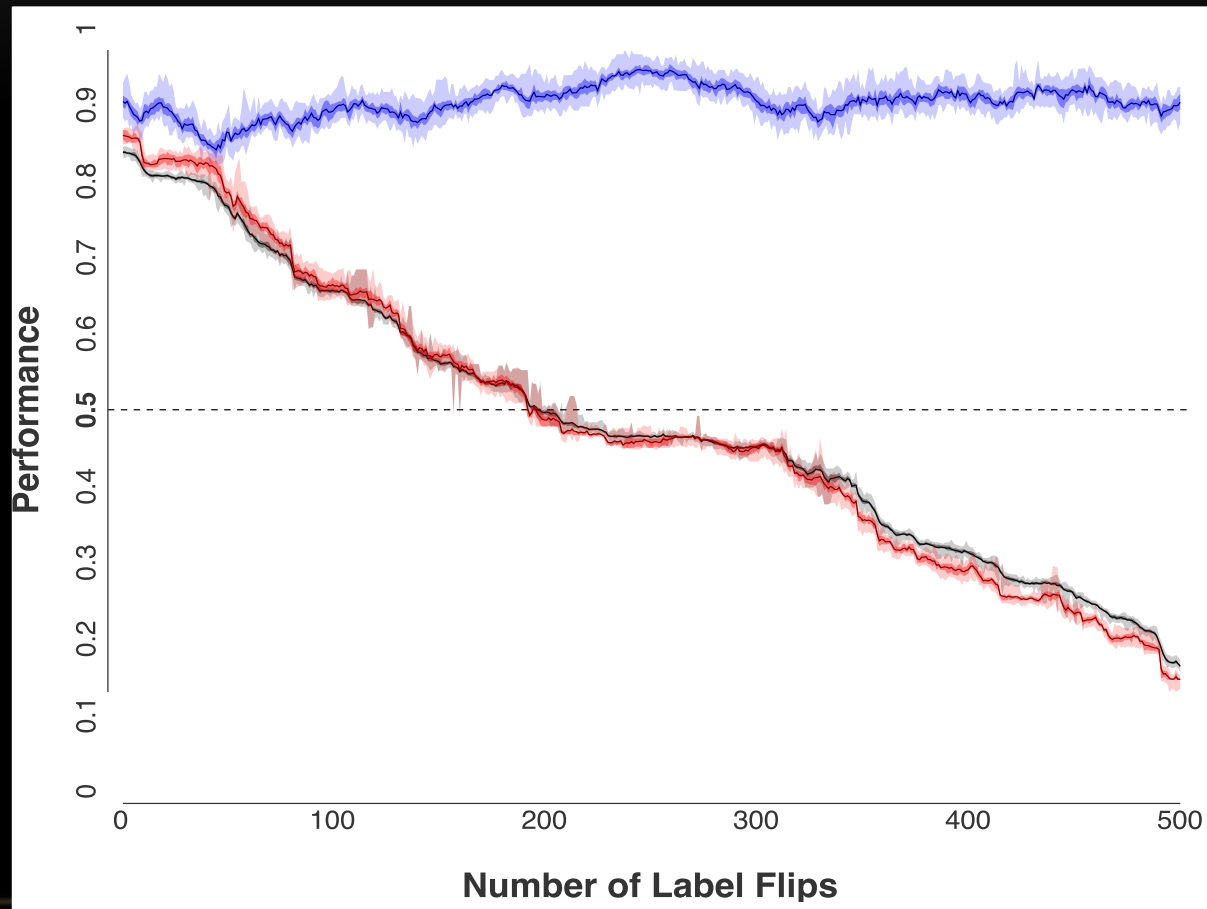
MEASURING SUPERVISED LEARNING

- Accuracy = Num Correct / Num Possible
 - Requires knowing correct labels
 - However, the defender no longer has correct labels!
- Defender can only measure his accuracy against the altered labels

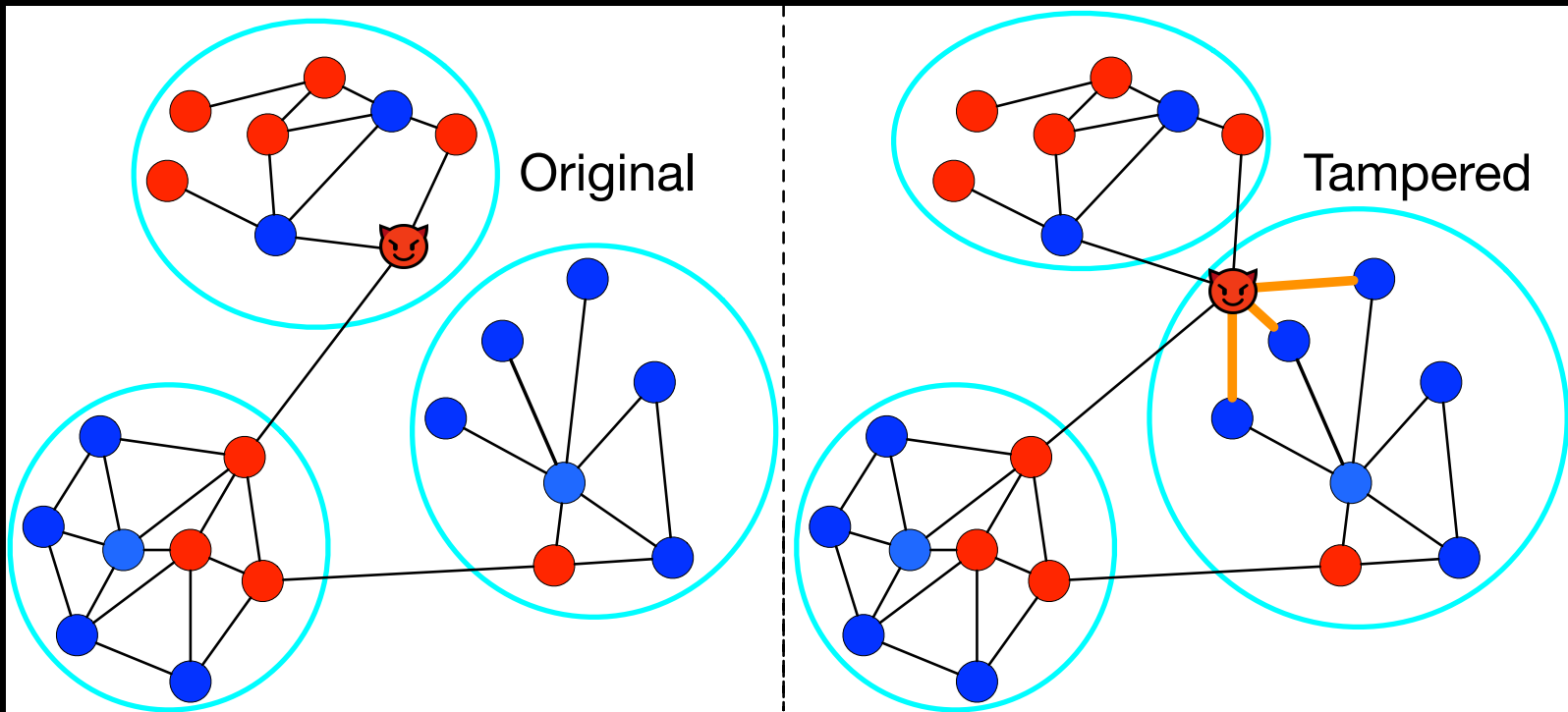
SUBVERT CONFIDENCE



SUBVERT WITHOUT DETECTION



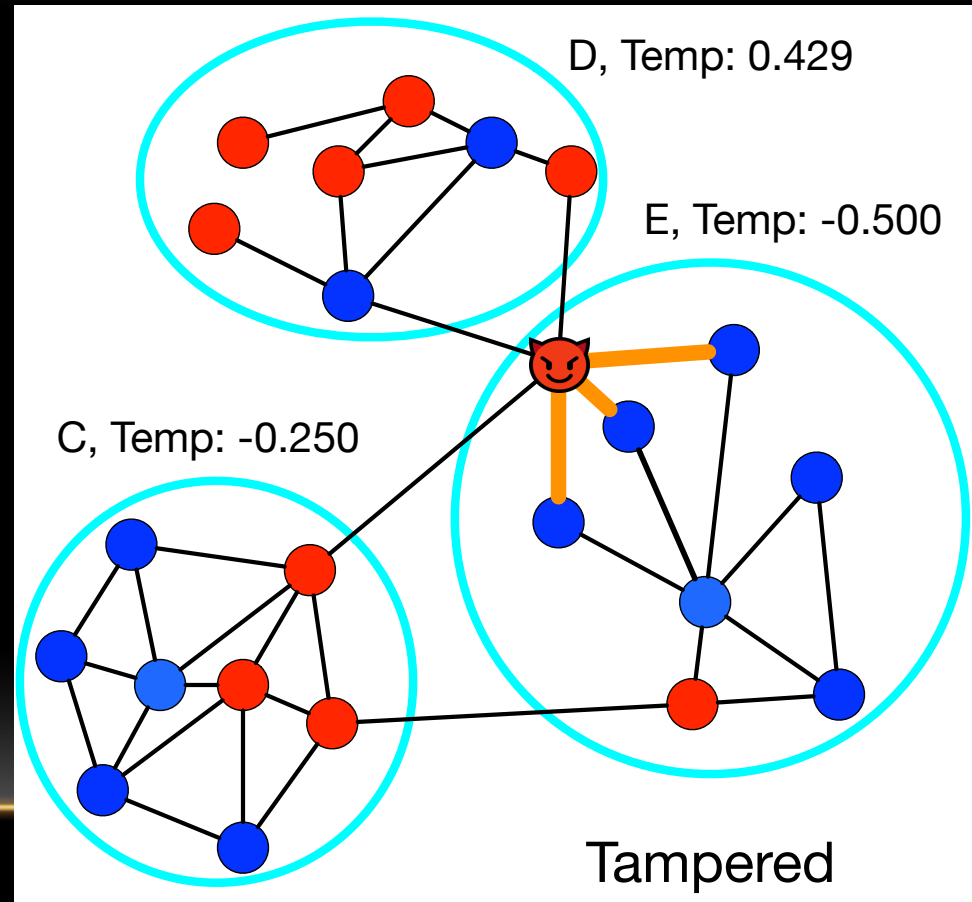
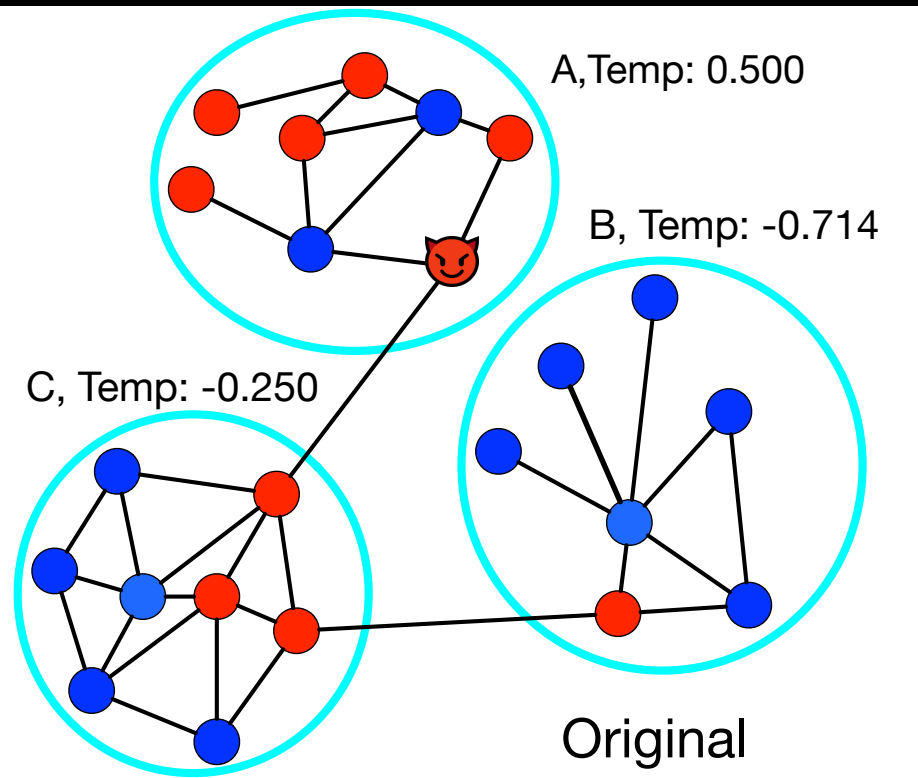
ATTACKING COMMUNITY DETECTION



Kegelmeyer, Wendt, and Pinar, 2018

COMMUNITY TEMPERATURE

Hot (red) = 1; Cold (blue) = -1; Unknown = 0
Community temp is average of nodes' temps
Higher temperature is more suspicious



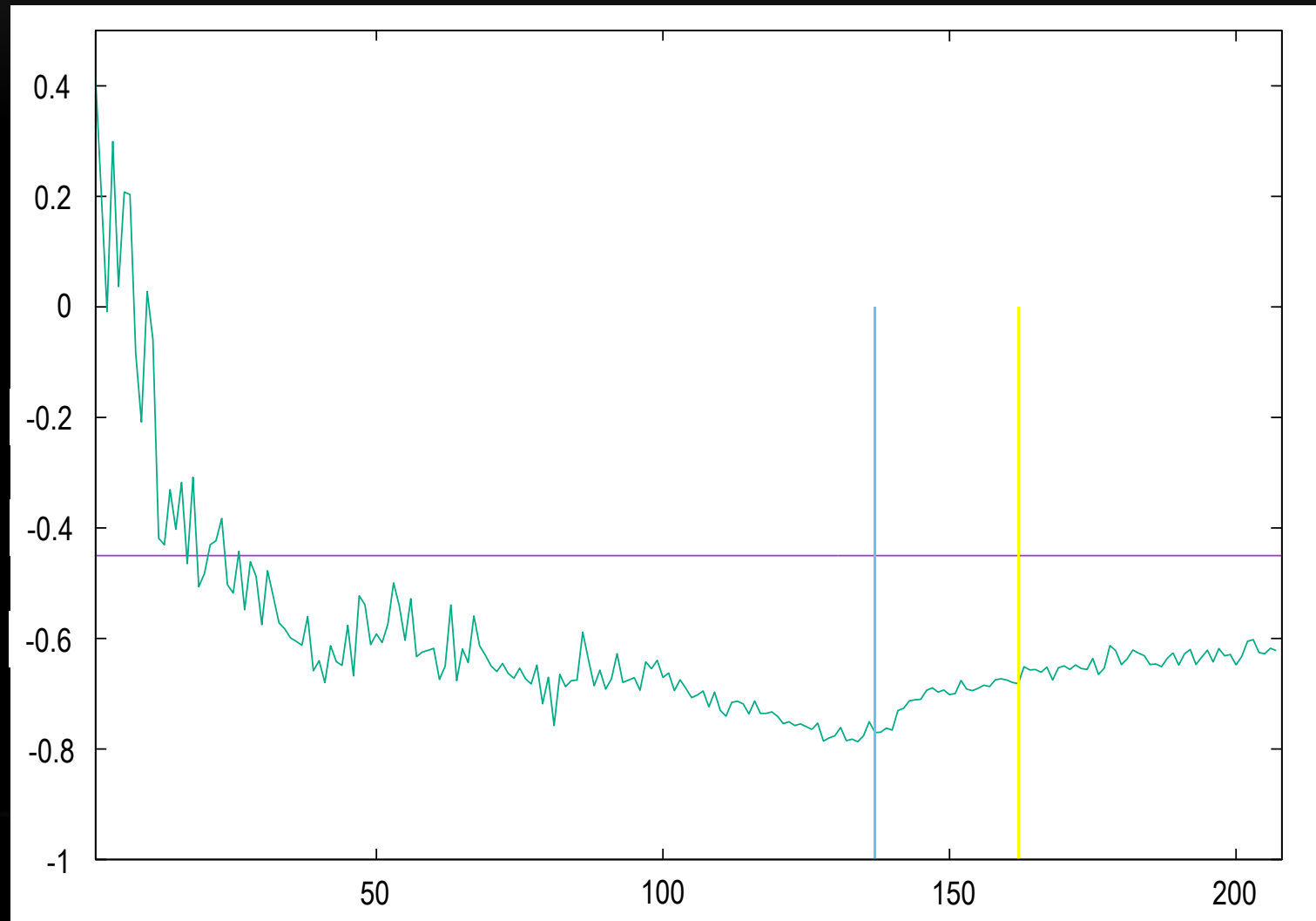
ATTACK HEURISTICS

- Attacker wants to be in cold community
 - He can add edges between his node and others – which to add?
- *Random* – Add random edges; used as a baseline
- *Stratified Random* – Random to cold, then unknown, last hot
- *Cold and Lonely* – Stratified random, but lower degree first w/in temperature bands
- *Stable Structure* – Exploit graph structure; next slide
- *Greedy Pessimist* – Exhaustively compute worst case; computationally infeasible in general, approximately worst case

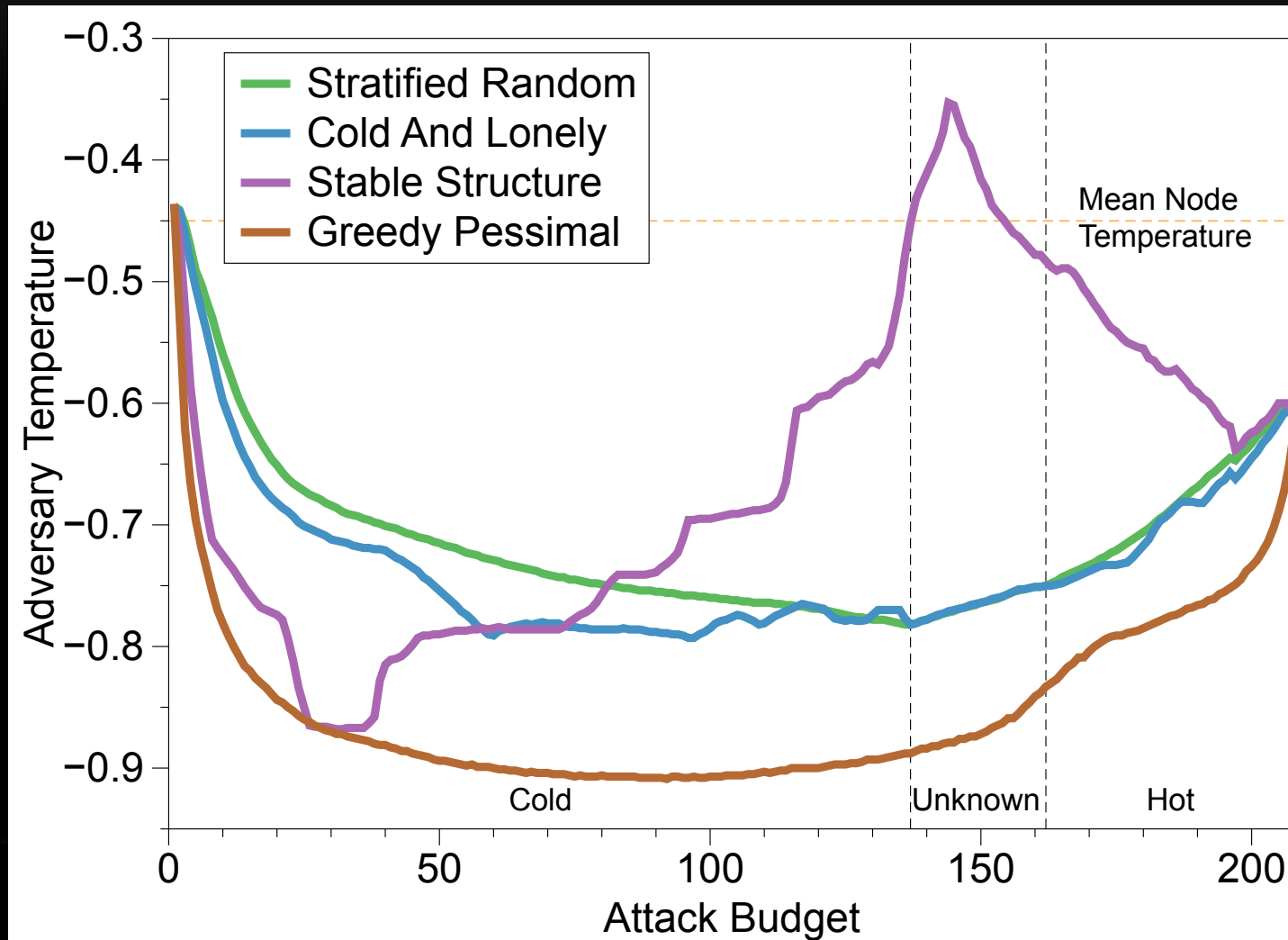
STABLE STRUCTURE



CREATING ATTACK PLOTS



ATTACK EFFECTIVENESS




DATA ANALYTICS NEED DEFENSES

- Computer Networks in 1990s → Data Analytics in 2019



26 March 1999

Melissa worm infects computers globally.



WebDevelopersNotes.com

A teal-colored rectangular box containing text and an icon. At the top, a white banner with a black border contains the date "26 March 1999". Below the banner, the text "Melissa worm infects computers globally." is written in white. Underneath the text is a yellow envelope icon with a green bug on it. At the bottom right corner, the text "WebDevelopersNotes.com" is written in a small font.

DYNAMITE



Alfred Nobel

COMPETITION IS UBIQUITOUS

